

FLECKVIEH WORLD

The magazine for Fleckvieh breeding

Functional
Dairy Cows

Page 4



Fleckvieh in Columbia

7

Fleckvieh Bulls

14

**BAYERN
GENETIK**

Perfect Match.

INDEX

Editorial	3
Breeding concepts to create functional dairy cows	4
Three generations of Bayern-Genetik bulls	6
Columbia and the possibilities of Fleckvieh	7
Foundation of Asosimmental Venezuela	8
Top Fleckvieh in Slovakia	10
Virtual Fleckvieh show	11
ILION, the ideal bull	12
The story of Brigit A Champion cow	13
Bulls information	14

Bayern-Genetik GmbH

www.bayern-genetik.com**Headquarters Grub**

Senator-Gerauer-Straße 19
85586 Grub/Post Pöing
Phone: +49 (0) 89-99 15 20-0
Fax: +49 (0) 89-99 15 20-66
eMail: grub@bayern-genetik.de

Headquarters Landshut

Altenbach 2
84036 Kumhausen
Phone: +49 (0) 8 71-9 53 10-0
Fax: +49 (0) 8 71-9 53 10-10
eMail: landshut@bayern-genetik.de



Students of the agricultural Zone College in Doetinchem (Netherlands) visited the dairy-farm of Clemens and Frank Kleinbielen in Schwalmatal (Germany). Here they saw what you can do when you use the changes that are offered. In 2009 the Kleinbielen family started their journey with Fleckvieh and are more than satisfied today. In total their farm has now a Fleckvieh herd with 420 heads and they are convinced that they are on the right track for the future with those dual purpose cows.

Editor

Martin Zirnbauer-Heymann

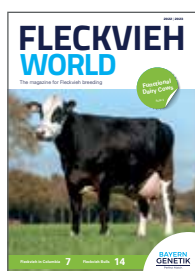
Reprint and duplication of the contents
are not allowed without approval of publisher.

Publisher

Heimert Elements
Inh. Dennis Heimert e. K.
Beverstraße 1a
37574 Einbeck
Phone: +49 (0) 55 61-93 36-0

The Fleckvieh-World is real!

The cattle photos published in the Fleckvieh-World are not retouched. Cattle that are photographed are only allowed to be shared, washed and treated with oil, powder and gloss spray.

**Cover 2022/2023**

Lone 1, a F1-crossbreeding cow from the Netherlands, father RIJEKA. This sire is used a lot as a perfect crossbreeding partner for Holstein cows.
Foto: Els Korsten

Dear Fleckvieh breeders, Dear customers and friends of Bayern-Genetik



I hope, you are healthy! In 2022, news about the war in Ukraine or the drought in large parts of the world replaced news about Corona. Both factors (war and drought) are driving the prices of production factors and agricultural products to unprecedented heights. We are in a turbulent time - and it will continue.

In these times, it is important to have strong partnerships that you can rely on. We have long-standing partnerships with you, our farmers and customers around the world. You can see some examples in the reports in this magazine of farms and shows from Italy, Columbia, Venezuela, Czech Republic, Slovakia and the Netherlands. Thank you very much for your confidence!

These are not the first crises we have faced together - and they will not be the last. We have developed

the tool for this in responsibility for the Fleckvieh breed for generations. Have a look at our breeding concepts to create functional dairy cows! Our dual-purpose breeding of Simmental cattle with high reliabilities ensures the success of your breeding and the success of your farm also in turbulent times. Please visit us on Facebook "Bayern-Genetik Deutschland" or on our homepage to get information or for signing up for our newsletter.

Yours sincerely,

A handwritten signature in blue ink, which appears to read 'Martin Zirnbaumer-Heymann'. The signature is fluid and cursive.

MARTIN ZIRNBAUER-HEYMANN

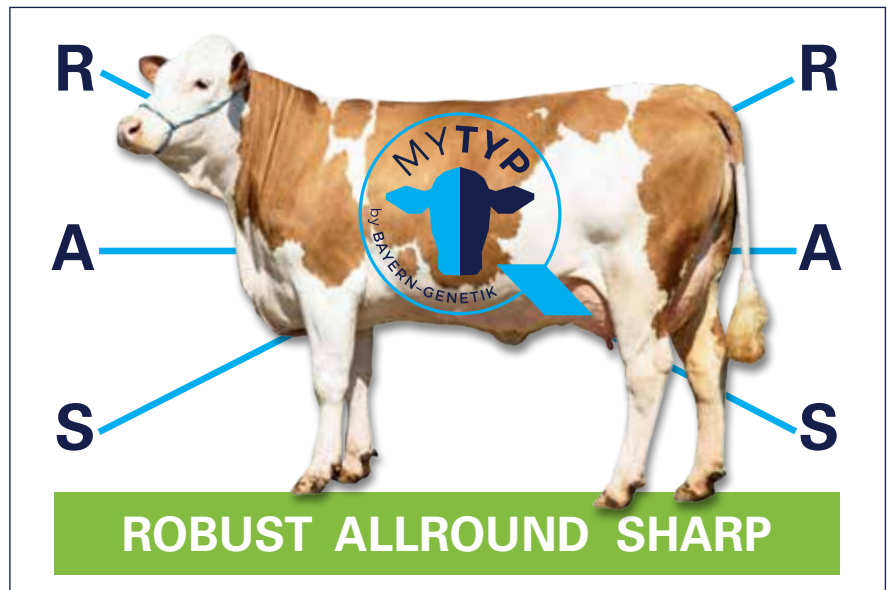
Breeding concepts to create functional dairy cows

Regardless of breed chosen, there are cows that will have a long productive life on dairy farms and unfortunately there are many more that go by the wayside by not remaining in the system.

Long-lived cows are unique on every farm; however, they all appear to have a common 'look' to them. They are deep chested, open toward the back, open ribbed with large capacity (shaped like a 'V' - front to back) and have a refined head. And they are the cows that contribute greatly to profitability and usually go unnoticed as they do their job year in year out.

Bill Weekes, the founder of aAa mating started a revolution with his ideas emphasizing the importance of balanced breeding. His system uses six different codes done by visual evaluation to describe the strengths and weaknesses of the cow. The aAa breeding goal is to create balance in form and function of the animal with the desire for high production and high productive life. Over the last decade, genomic science has focused on animals to meet a narrow target and what is defined as right (lots of milk). This selection has resulted in more closely related sire groups that score high in desired traits. Interestingly, they possess the codes annotated as aAa 234 (or a variation of these numbers as the first three). In the view of aAa analysis a repeated use of one style of animal can in fact result in less balance and may not necessarily create form and function.

The question I often get is: Is it even important to have high productive life when modern dairy cows can



produce so much milk in their first and second lactation? Is there value in capturing subsequent lactations?

Crossbreeding has been a way to address more balance in animals and capturing more lifetime production by integrating positive aspects of differing breeds to a dairy herd. Hybrid vigor helps to generate offspring that is superior to either parent, but it can conceal problems. If the crossbreeding system is not well designed, dairies complain about undesirable outcomes. This occurs on the second or third breed rotation and now requires considerable logical changes.

The goal? Achieve productive life and sustainable milk yield. Achieve health. Achieve reproduction. A good cow milks well, she gets pregnant to calve for a 12-month interval

and should she not be able to last four lactations? After all the later lactations are the real profit makers and can be achieved when cows are less extreme for type. Breeding sharp (S) to round (R) to create an all round (A) cow and then try to maintain an all round functional cow.... Or employ the use of aAa mating systems. Doing that is still much better than just breeding on paper. Train the breeders to understand balance when making a breeding decision. Breeding good cattle has to take into account both phenotype (what we see) and genotype (genetic make up, net merit, pedigree).

„As Bayern-Genetik is the founder of Crossbreeding with Fleckvieh we are aware of the history, the present and the future of our work.“ explains Dr. Thomas Grupp. „Give the cow what she is missing through the

mating with a selected highly proven bull!"

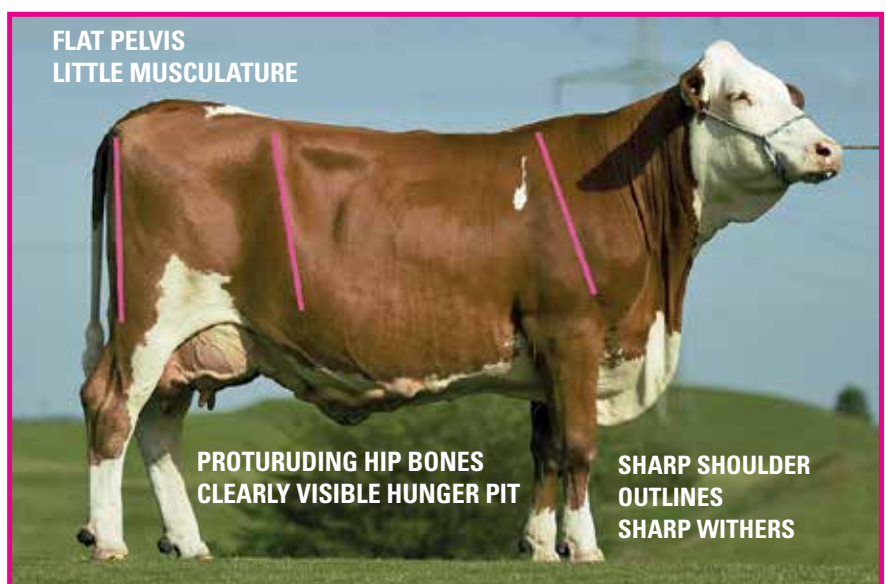
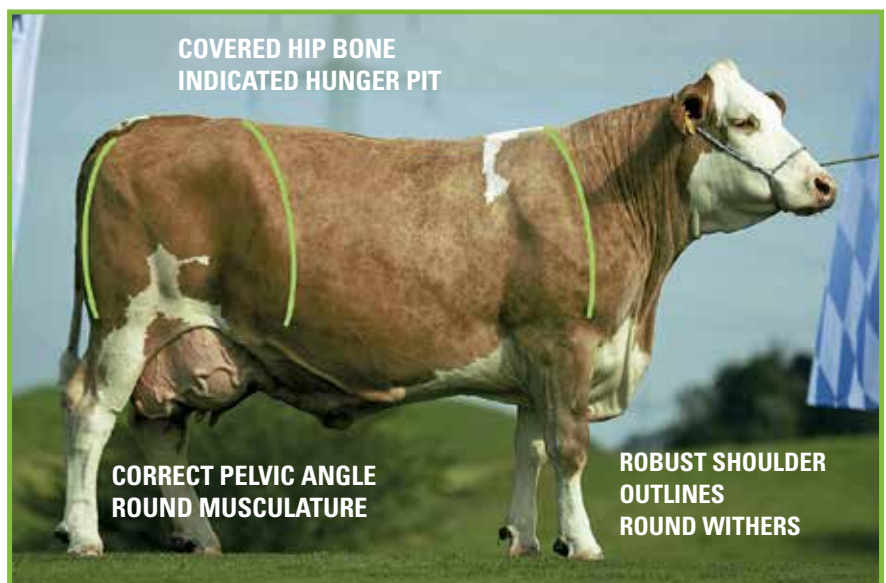
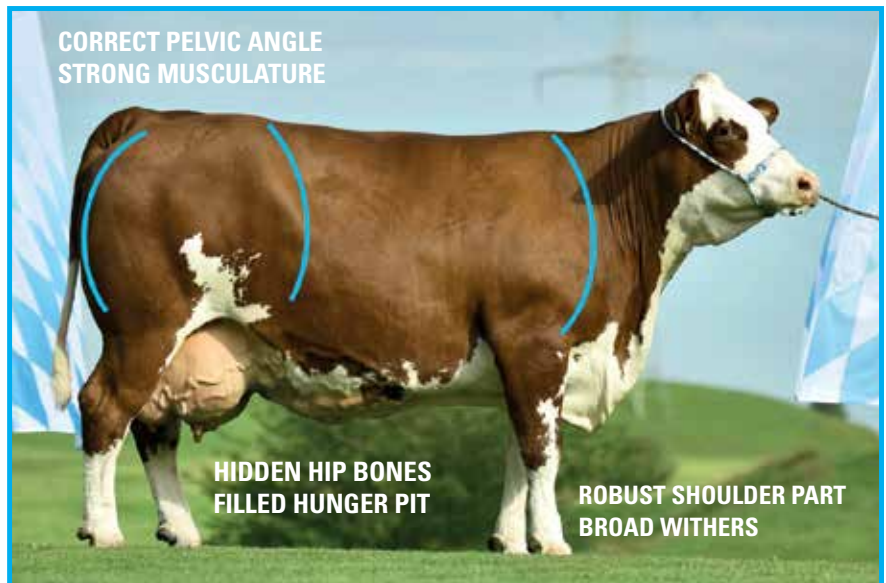
Bulls that perform excellent in pure-breeding can fail in cross-breeding. We have seen this specifically when using bulls to crossbreed that are aAa coded the same as many of the modern sires already available. Never go for crossbreeding if you have no proof from the sire breed and only breeding values respectively. And never forget to look at the bull (Cave: Most of the young bulls outside Bayern-Genetik are photo-shopped, you can't see the truth) – so ask the Rep to show you a non-photoshopped picture of the bull.

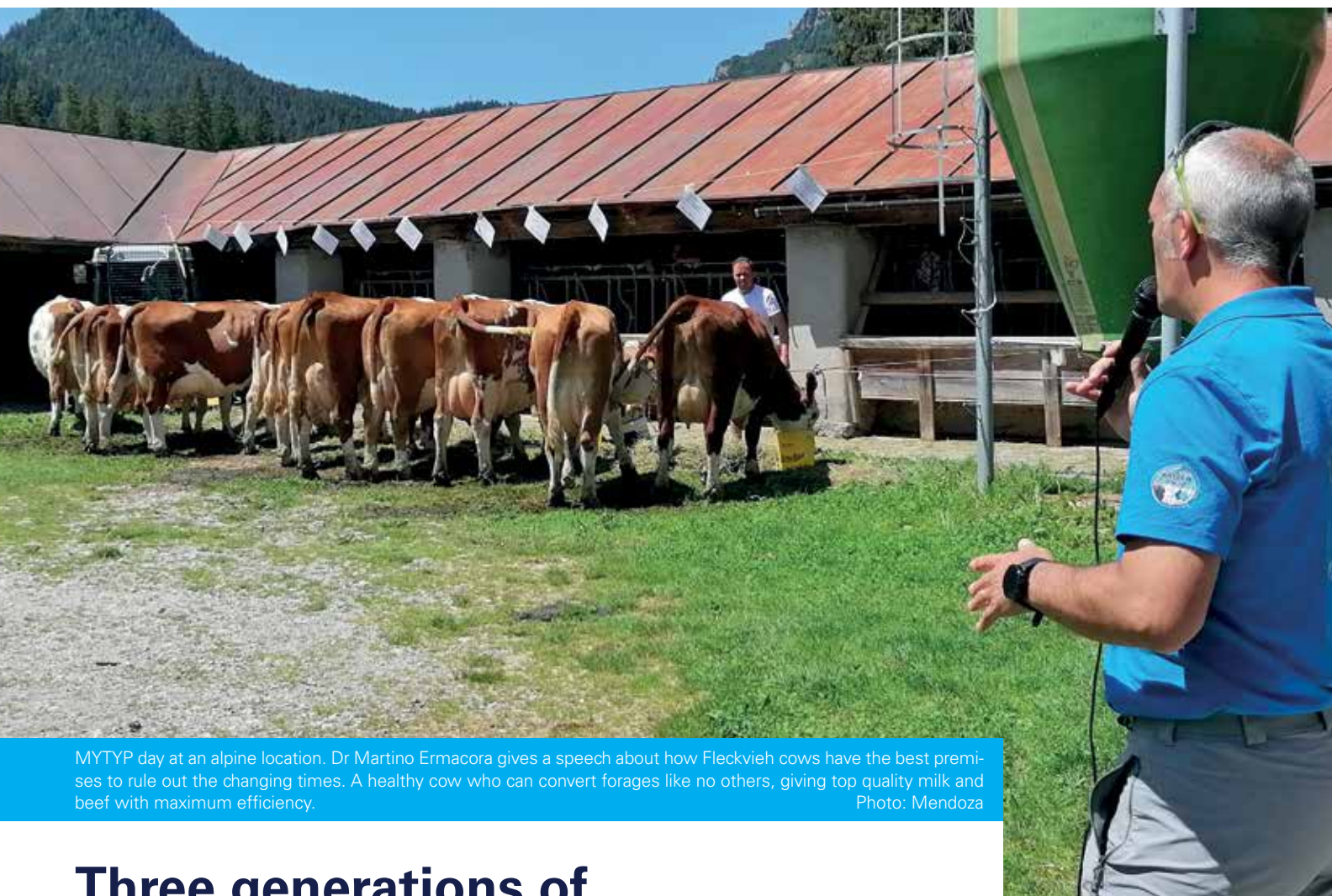
The future is difficult for dairy farmers – but what is a fact - the cow feeding will go more for forage and less for corn and concentrates respectively.

Animal Welfare will have tremendous emphasis for the Dairy Industry and always keep in mind: „Skinny cows aren't sexy“ (Prof. Chad Dechow). Animal husbandry will change completely – more markers for animal health (liver, kidneys) for milk & beef production. It's like a Corona test before you start milking – if the test is positive the milk of Daisy 123 will be discharged and all data go to a central computer....!

Balanced cattle are insurance for future disruption in the dairy industry – start now and select a herd of cattle to comply with the consumer's mind (Milka Cow). To succeed, the breeders' eye has to be trained and she or he needs to make the right decision. After all, that moment comes only once a year and dictates the next generation.

DR. JOHN POPP
DR. THOMAS GRUPP





MYTYP day at an alpine location. Dr Martino Ermacora gives a speech about how Fleckvieh cows have the best premises to rule out the changing times. A healthy cow who can convert forages like no others, giving top quality milk and beef with maximum efficiency. Photo: Mendoza

Three generations of Bayern-Genetik bulls

If you visit the Zampol farm in San Pietro di Cadore (BL), in North East Italy in summer, while the animals are grazing, you will be amazed by the splendid views offered by the alpine landscape of Valvisdende. But if you go there in winter, while the animals are in the stable, the impression will be the same.

„The quality of the Bayern-Genetik bulls has a great merit in the success of my herd, the grazing animals need strength and substance to face unfavorable moments. But when they are in the stable and are treated well they give back everything in milk and quality what they have accumulated“, says Dario Zampol.

Dario, Michele and their father Stefano, are proud to show 11 out of

45 cows in top condition on the “MYTYP day” farmer’s meeting organized by Bayern-Genetik Italy.

„The herd is certified organic and during summer the cows are milked in the mountain pastures. We’re really satisfied with them. We produce average 8,000 kg of milk per cow. We sell strong, vital, beefie bull calves and when I observe animals like those we’re showing today I am very satisfied with

my genetic choice. Look at them, they’re perfectly adapted to the pasture, they just get a 2 kg concentrate appetizer during milking (if they milk more than 25 liters) and go over 30 kg of milk with no stress at all.“

Let’s look at this cow with three generations of Bayern-Genetik sires in succession in pedigree: sire BG RAFFZAHN, ds BG ZAUBER and gds BG DON JUAN. The

highest milk index between this three old bulls is +62 kg, but this cow is producing 36 liters per day here on the pasture, with peak at 50 liters in the first part of lactation in the stable. She's already pregnant with BG BOLOGNA. And despite being in fourth lactation she still has a perfect udder. Shall I look for something else?"

DR. MARTINO ERMACORA



RULA, a RAFFZAHN x ZAUBER x DON JUAN daughter with 36 liters of milk on alpine pasture, proudly showed by Michele Zampol. Photo: Dr. Ermacora

Columbia and the possibilities of Fleckvieh

Columbia is one of the countries in South America where it has been possible to establish Simmental cattle in the last 20 years.

Through consistent breeding, import of the best Fleckvieh bulls and the best embryos, a remarkable level and a very good breeding quality has been achieved. Simmental cattle are used both in pure breeding in the highlands and as crossbreeding partners for Bos

Indicus breeds in the hot areas to increase the milk and meat yield of these local breeds. Tropical suitability and eye pigmentation and dark color play a major role in bull selection. Initially, MANITOBA and MANDELA were strongly used here and also RAFFZAHN and

HAERTSFELD have proved very successful. Recently, polled bulls become more interesting for the farmers, with MAHANGO Pp* genetics proving very successful in all criteria.

DR. MARTIN MAYER



Carisma, a WAHNFRIED daughter was the overall winner and udder champion of the breed at the 28th Simmental National Show in Bucaramanga 2017. Breeder: San Jose de la Cumbre.



F1 cow (Simmental x Brahman), a WITZBOLD daughter with F2 Simmental bull calf by RIJEKA in San Juan del Cesar, Ganaderia Mayalagrande.

Foundation of Asosimmental Venezuela

Asosimmental Venezuela, was founded in 2014 by a small group of producers scattered throughout different states of the country. All these producers with great experience in tropical breeds, mainly Cebu, got to know the Simmental and became enthusiastic about the breed and wanted to delve into founding the project Asosimmental Venezuela.

Without its own headquarters and few administration inputs, the Association dedicated itself that same year to complete all the collections needed to carry out a project of this magnitude. Thanks to the advice of other Associations from neighboring countries this was made possible and in the same year we received an invitation from Bayern-Genetik to visit their facilities in Munich, Germany.

After this visit the work was hard and by the end of the year 2014 we were fully recognized as an Association by official entities. Despite the country situation, we were not daunted and started our Simmental work. We did not have many illusions about the work to follow, but we dedicated ourselves keen to looking for a Dual Purpose Simmental. We managed to find a pure breed

herd quite small and with imported semen supplied by neighboring countries, with the goal of obtaining a Simmental Fleckvieh by absorption and the pure Simmental Fleckvieh of origin. As mentioned before, despite the current economic situation and hyperinflation, our purebred and crossbred herd has grown exponentially and Simmental cattle are known throughout the whole country. The purebred herd has not grown as much as the crossbred herd, but a large part of our purebred females have been used to obtain embryos and the semen of our purebred bulls has been used in the crossbreeding with the herds we had. We are processing the purchase of sexed semen (female) and the possible importation of pure heifers to accelerate the Pure Simmental of Origin. Since 2015 we have establis-

hed a genealogical registry, which allows us to sell our products to local partners with different Simmental and other breeds.

In a way that we consider extraordinary, Asosimmental Venezuela held its first auction on the farm of one of our enthusiastic members of the board of directors and it was broadcasted on the local television agricultural program. The success was great and the Simmental is no longer an exotic breed, not only for Venezuela and South America, but THE Universal Race.

We thank Bayern-Genetik and Dr. Martin Mayer for their patience with us during these difficult years and we look forward to our future in Pure Simmental breeding.

ING. MANUEL BELISARIO AYALA

Asosimmental Venezuela

Asosimmental Venezuela, fue fundada en el año 2014 por un grupo pequeño de productores esparcidos por diferentes estados de Venezuela todos estos productores con gran experiencia en razas tropicales, principalmente cebú, conocieron el Simmental.

Con gran entusiasmo en la raza y queriendo ahondar en el proyecto, fundaron Asosimmental Venezuela sin contar con propia y con pocos insumos de administración. La Aso-

ciación se dedicó arduamente ese mismo año a completar todos los recaudos necesarios para hacer andar un proyecto de tal magnitud, contando además con el asesora-

miento de Asociaciones de países vecinos. También en el 2014, recibimos la invitación de Bayern Genetik para visitar sus instalaciones en Múnich, Alemania. Luego de esta

visita el trabajo fue arduo y ya para finales de ese año 2014, éramos totalmente reconocidos como Asociación por las entidades oficiales. A pesar de la situación económica, nuestro rebaño puro y mestizo ha crecido exponencialmente y actualmente el ganado Simmental se conoce en el país. El rebaño puro no ha crecido tanto como el de los cruces, ya que gran parte de nuestras hembras puras han sido utilizadas para la obtención de embriones y el semen de nuestros toros puros para el cruzamiento con los reba-

ños que teníamos. Estamos tramitando la compra de semen sexado (hembras) y la posible importación de novillas puras para acelerar el Simmental Puro de Origen. Desde el 2015 contamos con registro genealógico, lo que nos permite realizar ventas de nuestros productos a los socios locales con diferentes composiciones Simmental y Puros. De manera que consideramos extraordinaria, Asosimmental Venezuela realizó su primera subasta en la finca de uno de nuestros entusiastas miembros de Junta Directiva

y que fue transmitida en programa agropecuario de la televisión local. El éxito fue grande y el Simmental ya no es una raza exótica, sino para Venezuela y Sudamérica, la Raza Universal.

Agradecemos a Bayern Genetik y al Dr. Martin Mayer por la paciencia que han tenido con nosotros estos años difíciles y vemos nuestro futuro Puro Simmental.

ING. MANUEL BELISARIO AYALA



Top Fleckvieh in Slovakia

Cooperative Farm SPD Vesele is leader in Fleckvieh cattle breeding in Slovakia. The last recorded milk performance of 450 dairycows is 8.336 kg of milk in 305 days with an intercalving period of 373 days.

This performance was under less optimal circumstances. Meanwhile the cows are in a new free stall barn. But also in the old barn Bayern-Genetik cows came to very good results as the following pictures and data show.



WALFRIED daughter, 100 days in milk, 2,982 kg, Udder score 84.

Photo: Varchola



WALFRIED daughter, 100 days in milk, 3,066 kg, Udder score 87.

Photo: Varchola



WALFRIED daughter, 200 days in milk, 5,708 kg, 4.67 % fat, 3.41 % protein.

Photo: Varchola



WOLGASAND daughter, 100 days in milk, 2,812 kg, Udder score 81.

Photo: Varchola



ZAUBER daughter, 100 days in milk, 3,494 kg, Udder score 85.

Photo: Varchola



Show cows from Czech Fleckvieh breeder GenAgro Ricany.

Photo: Basovnik



Virtual Fleckvieh show

The pandemic was an opportunity to try something new. As well as a big part of our business or education was moved to online meeting rooms, we organized the first virtual fleckvieh show in Czech ever. One may say to watch cows on a computer or a mobile phone is like licking honey through the glass, we can also see some advantages. There was no need to transport the cows out of the farm, no risk of injury during the transport or infection.

The biggest advantage is that the online show brings Fleckvieh to the most remote corners of the world and can be watched anytime over again. Very interesting for us was also how our colleagues from different countries saw the Czech Fleckvieh.

To make it more interesting for the public, there was an opportunity to vote for the best cow online as well.

The jury and their choice:

„In the group of the 16 cows I was very much attracted by 2 cows, two first calvers BETA and LETTY. Both cows are ranked for me as robust-athletic cows (RA-Type) which I believe will have a great future in the dairy industry. I would like to see this type of cow in the future in all the herds – they have the potential to survive difficult periods during lactation (net-energy-deficit)

or less food quality. Please, if you meet the breeders of these 2 cows congratulate them and they should carry on!“

DR. THOMAS GRUPP, Germany

„For me the overall champion is LETTINKA. She is a very nice heifer with a lot of youth, length in her body, super pelvis, good feet and legs, top udder with a lot of texture and length in the bottom of the ud-



Show cow, Pascha's daughter.

Photo: Basovnik

der and super central ligament, dry muscularity, allround type. A cow with no mistakes!"

STEF BEUNK, Holland

„I would put the cow JITKA on the highest step of the podium because I see in her better the complete cow

we need in the Fleckvieh breed. She is an allround/robust medium framed cow with great development of the body, very good muscling that you can see on the robust forearm, strong loins and well muscled hindquarter. Very strong feet and correct legs predict a long stay of

the cow in the barn. The cow shows great milk production potential with very functional udder traits."

DR. MARTINO ERMACORA, Italy

„The best for me is the cow LETTINKA. Very good frame and capacity with attached udder and expressed ligament."

ING. JIRI ANDRYSEK,

Ph.D. Czech Republic

„The best cow for me is TYNA, a cow with excellent constitution, musculature, excellent depth of the middle and width of the back. Excellent udder depth and length."

RENIER VAN VUUREN, Zambia

MICHAL BASOVNIK

Breeding Cooperative Impuls

ILION, the ideal bull

The pictures and the data show that Marijke 72 from the farm of the Harbers-Ruesink family follows the perfect route to 100.000 kg of milk.

The ILION daughter started as a heifer with a milk production of 24 kg milk/day. When Marijke calved for the 11th time she produced 31 kg milk/day. The crown on her impressive career is not only her perfect body condition and her strong constitution. But what do you think of the average of **5.27 % fat and 3.95 % protein**. This makes us and the farmer happy!

STEF BEUNK



The development of Marijke 72 from heifer to cow with 100.000 kg of very expensive milk. Photo: Menop



National cattle show in Nitra in 2017- Best Udder award. 1. lactation, 91 days, 2,201 kg milk, 3,68 % Fat, 3,45 % Protein. Photo: Vladimír Varchola



August 2018 - National cattle show Nitra- Best Udder award. Photo: Vladimír Varchola

The story of Brigit A Champion Cow

The story of the cow Brigit started late on February 23rd, 2015. She was born as a female calf on Cooperative farm Vesele, light yellow coated color, a WALDHOER ET out of DON JUAN, both Bayern-Genetik bulls.

The calf grew up to a nice, balanced heifer with deep body and correct type. Her first lactation was very flat and the farm manager was really impressed with the quality of the udder. That was the reason, why she was selected for National cattle show in Nitra in 2017. Brigit won the Best Udder Award without any doubts.

She was selected as vice champion cow as well. Next awards were following almost regularly every year:

During the COVID time was no cattle shows took place. In 2020 cows from SPD Vesele were moved to the new location and the new owner, cooperative farm PD Senohrad. Brigit survived the transfer to new farm without any loss of health and in 2022 she is again in the ring at the Simmental Cup 2022 competition, which took place in the Nestville Park Hniezdne. At this time she had already 5 calves and a lifetime production

of 52,643 kg milk and 2,222 kg fat. The competition was strong and the Italian judge Lorenzo Degano had to select the champion cow out of 54 cows. It was not a surprise, that champion cow of this event is Brigit, thanks to her continuously good udder and very well balanced body.

Congratulations to PD Senohrad!

VLADIMÍR VARCHOLA



August 2019 National cattle show Nitra- champion cow, best udder award. Photo: Vladimír Varchola



Simmental Cup 2022.

Photo: Marian Dukes, Slovenský Chov



HEX HEX Pp*

HB-Nr. 866045 | DE 09 54725619 | *26.03.2019
Breeder: Bernhart, Oberneukirchen
aAa-Code 564132 | BC: **A2A2** | KC: AA | ET



Photo: Pfaller

TYP: **S** **A** **R**

PEDIGREE LINE: Huch

HOKUSPOKUS HURLY HULKOR
DE 09 51718913 Nelle NARR
Nelli

Lilara 85-85-88-85 **MAHANGO Pp*** MUNGO Pp
DE 09 52237437

3/305 9.058 4,36 3,70 Liral **HUMPERT**
HL: 2. 9.226 4,25 3,81 4/4,4 10.198 4,15 3,75 Lira

TMI	MI	BI	FIT
127 79%	120 86%	107 81%	112 83%

● ALLROUNDSIRE ● SUPER COW FAMILY

MILK

Dtrs. HD kg Milk kg +610 Butterfat % +0,05 Protein % +0,06

BEEF

Daily gain **109** 82% Dressing perc. **101** 80% Carcass grade **106** 78%

FITNESS

Productive life	111 72%	Persistence	97 79%	Fertility	106 73%
Udder health	109 82%	Cell count	108 78%	Milking speed	98 83%
Calving ease pat.	115 99%	Prod. increase	91 74%	Calf vitality	112 97%
Calving ease mat.	106 89%	Semen fertility	-1%	BIO	121 85%
Milking behaviour	102 61%				

TYPE TRAITS DAUGHTERS: (80%)

	76	88	100	112	124	136
Body						
Muscularity						
Feet & Legs						
Udder						
Cross Height	98	small				large
Body Length	100	short				long
Hip Width	100	narrow				wide
Body Depth	99	shallow				deep
Pelvic Angle	100	ascending				slope
Hock Angularity	99	straight				sickled
Hock Development	100	swollen				dry
Pastern	110	weak				strong
Hoof Height	106	low angles				steep angles
Fore Udder Length	100	short				long
Rear Udder Length	103	short				long
Att.of Fore Udder	110	loose				tight
Suspensory Ligament	98	weak				strong
Udder Height	107	deep				high
Teat Length	108	short				long
Teat Thickness	98	thin				thick
Teat placement (front)	106	wide				close
Teat placement (rear)	94	outwards				inwards
Teat direction (rear)	101	outwards				inwards
Udder Purity	99	add. teats				no add. teats



INGMAR PP*

HB-Nr. 167777 | DE 09 54486471 | *08.06.2019
Breeder: Köppel, Feilitzsch
aAa-Code 564132 | BC: **A2A2** | KC: AA



Photo: Müller

TYP: **S** **A** **R**

PEDIGREE LINE: Redad

IROKES P*S IROLA PS ROTAX
DE 09 47633254 Tabea WYOMING
Tanne

1005 88-84-80-84 **VOLLGAS P*S** VALERO
DE 09 51271925

2/305 8.266 5,08 3,60 902 **HUTERA**
HL: 1. 8.266 5,08 3,60 5/4,9 10.623 4,53 3,75 788

TMI	MI	BI	FIT
128 79%	121 86%	114 80%	106 84%

● UDDER HEALTH ● SUITABLE FOR HEIFERS

MILK

Dtrs. HD kg Milk kg +191 Butterfat % +0,39 Protein % +0,19

BEEF

Daily gain **110** 82% Dressing perc. **115** 80% Carcass grade **109** 78%

FITNESS

Productive life	114 74%	Persistence	95 79%	Fertility	91 74%
Udder health	114 83%	Cell count	115 79%	Milking speed	101 84%
Calving ease pat.	110 99%	Prod. increase	112 75%	Calf vitality	101 96%
Calving ease mat.	108 90%	Semen fertility	+2%	BIO	125 86%
Milking behaviour	100 62%				

TYPE TRAITS DAUGHTERS: (80%)

	76	88	100	112	124	136
Body						
Muscularity						
Feet & Legs						
Udder						
Cross Height	93	small				large
Body Length	98	short				long
Hip Width	93	narrow				wide
Body Depth	99	shallow				deep
Pelvic Angle	107	ascending				slope
Hock Angularity	107	straight				sickled
Hock Development	117	swollen				dry
Pastern	100	weak				strong
Hoof Height	99	low angles				steep angles
Fore Udder Length	100	short				long
Rear Udder Length	90	short				long
Att.of Fore Udder	97	loose				tight
Suspensory Ligament	103	weak				strong
Udder Height	102	deep				high
Teat Length	89	short				long
Teat Thickness	85	thin				thick
Teat placement (front)	92	wide				close
Teat placement (rear)	101	outwards				inwards
Teat direction (rear)	103	outwards				inwards
Udder Purity	100	add. teats				no add. teats

MAINSTREAM Pp*

HB-Nr. 173334 | DE 09 50964480 | *22.12.2015

Breeder: Zierer, Pfeffenhausen

aAa-Code 432516 | BC: **A2A2** | KC: AB | ET



Photo: Gruber

TYP: **S** **A** **R**

PEDIGREE

LINE: Metz

MANIGO MANDELA MALEFIZ
DE 09 43304203 Nitti

Sulfur IROLA PS ROTAX
DE 09 48869578

6/3,7 8.737 4,52 3,94 Sula **WOLKENTANZ PS**
HL: 2020 9.586 4,52 3,89 5/5,2 8.282 4,46 3,57 Su

TMI	MI	BI	FIT
119 97%	110 99%	90 99%	118 96%

● **SUITABLE FOR HEIFERS** ● **GOOD FEET AND LEGS**

MILK

	Dtrs.	HD kg	Milk kg	Butterfat %	Protein %
1. L	492	8.038	+462 6.984	-0,07 4,16	-0,02 3,47

BEEF

Daily gain	89 99%	Dressing perc.	91 96%	Carcass grade	94 99%
------------	---------------	----------------	---------------	---------------	---------------

FITNESS

Productive life	113 89%	Persistency	96 99%	Fertility	107 93%
Udder health	123 97%	Cell count	124 98%	Milking speed	97 99%
Calving ease pat.	120 99%	Prod. increase	109 96%	Calf vitality	111 98%
Calving ease mat.	105 97%	Semen fertility	+0%	BIO	121 97%
Milking behaviour	100 84%				

TYPE TRAITS DAUGHTERS: 209 (95%)

	76	88	100	112	124	136
Body	104					
Muscularity	100					
Feet & Legs	117					
Udder	118					
Cross Height	104	small				large
Body Length	106	short				long
Hip Width	102	narrow				wide
Body Depth	104	shallow				deep
Pelvic Angle	106	ascending				slope
Hock Angularity	90	straight				sickled
Hock Development	109	swollen				dry
Pastern	114	weak				strong
Hoof Height	105	low angles				steep angles
Fore Udder Length	104	short				long
Rear Udder Length	109	short				long
Att. of Fore Udder	105	loose				tight
Suspensory Ligament	96	weak				strong
Udder Height	111	deep				high
Teat Length	90	short				long
Teat Thickness	89	thin				thick
Teat placement (front)	108	wide				close
Teat placement (rear)	109	outwards				inwards
Teat direction (rear)	114	outwards				inwards
Udder Purity	105	add. teats				no add. teats

MAWENZI P*S

HB-Nr. 180960 | DE 09 52411096 | *22.11.2016

aAa-Code 513462 | BC: **A2A2** | KC: AA



Foto: Müller

TYP: **S** **A** **R**

PEDIGREE

LINE: Metz

MAHANGO Pp* MUNGO Pp MANITOBA
DE 09 48097266 Falter

Sonne 86-80-80-85 **VANSTEIN**
DE 09 42909195

8/7,9 8.837 4,49 3,69 Sofie **HONER**
HL: 2013 10.396 4,19 3,75 10/10,6 8.260 3,80 3,60 Ottilie

TMI	MI	BI	FIT
115 90%	108 97%	103 95%	108 88%

MILK

	Dtrs.	HD kg	Milk kg	Butterfat %	Protein %
1. L	23	8.864	+371 7.461	+0,01 4,22	-0,05 3,50

BEEF

Daily gain	99 97%	Dressing perc.	104 87%	Carcass grade	102 95%
------------	---------------	----------------	----------------	---------------	----------------

FITNESS

Productive life	118 77%	Persistency	111 95%	Fertility	100 79%
Udder health	99 92%	Cell count	97 92%	Milking speed	100 94%
Calving ease pat.	107 97%	Prod. increase	104 77%	Calf vitality	100 89%
Calving ease mat.	104 90%	Semen fertility	+3%	BIO	116 91%
Milking behaviour	98 75%				

TYPE TRAITS DAUGHTERS: 76 (91%)

	76	88	100	112	124	136
Body	106					
Muscularity	110					
Feet & Legs	115					
Udder	97					
Cross Height	106	small				large
Body Length	107	short				long
Hip Width	98	narrow				wide
Body Depth	107	shallow				deep
Pelvic Angle	120	ascending				slope
Hock Angularity	105	straight				sickled
Hock Development	116	swollen				dry
Pastern	100	weak				strong
Hoof Height	108	low angles				steep angles
Fore Udder Length	92	short				long
Rear Udder Length	100	short				long
Att. of Fore Udder	103	loose				tight
Suspensory Ligament	110	weak				strong
Udder Height	106	deep				high
Teat Length	113	short				long
Teat Thickness	112	thin				thick
Teat placement (front)	83	wide				close
Teat placement (rear)	92	outwards				inwards
Teat direction (rear)	92	outwards				inwards
Udder Purity	103	add. teats				no add. teats

MAZZE

HB-Nr. 866084 | DE 09 55294299 | *17.04.2020

Breeder: Brandstetter, Polling

aAa-Code 435261 | BC: **A2A2** | KC: AB | ET



TYP: **S** **A** **R**

PEDIGREE

LINE: Metz

MANAUS

MIAMI

MINT

DE 06 67162219

Evelis

POLAROID

Bryena

ERBHOF

EILMON

DE 09 53643169

Bille

MAHANGO

3/2,5

7.893 3,93 3,63

Brigite

TMI
133 74%

MI
119 84%

BI
111 76%

FIT
120 78%

● PERFECT DUAL PURPOSE ● MILKING SPEED



MEERHOF Pp*

HB-Nr. 173293 | DE 09 51465128 | *14.03.2016

Breeder: Wimmer, Triftern

aAa-Code 516342 | BC: **A2A2** | KC: AA



TYP: **S** **A** **R**

PEDIGREE

LINE: Metz

MAHANGO Pp*

MUNGO Pp

MANITOBA

DE 09 48097266

Falter

ROUND UP

Emila

85-81-86-88

VANSTEIN

RANDY

DE 09 46387007

Eitel

MALFIR

8/5,8

8.920 4,19 3,59

1/305

7.338 4,45 3,71

Elkona

TMI
119 92%

MI
118 97%

BI
113 96%

FIT
96 91%

● VITAL CALF ● BEEF VALUE

MILK

Dtrs.

HD kg

Milk kg
+810

Butterfat %
-0,08

Protein %
-0,02

BEEF

111 76%

Daily gain

113 78%

Dressing perc.

106 74%

Carcass grade

108 73%

FITNESS

120 78%

Productive life

109 67%

Persistence

111 76%

Fertility

115 67%

Udder health

116 80%

Cell count

116 75%

Milking speed

109 82%

Calving ease pat.

95 91%

Prod. increase

108 70%

Calf vitality

106 70%

Calving ease mat.

105 75%

Semen fertility

+0%

BIO

130 81%

Milking behaviour

103 59%

TYPE TRAITS DAUGHTERS: (78%)

76

88

100

112

124

136

Body

112

Muscularity

108

Feet & Legs

110

Udder

109

Cross Height

117

small

Body Length

107

short

Hip Width

106

narrow

Body Depth

103

shallow

Pelvic Angle

120

ascending

Hock Angularity

96

straight

Hock Development

101

swollen

Pastern

111

weak

Hoof Height

103

low angles

Fore Udder Length

99

short

Rear Udder Length

100

short

Att.of Fore Udder

98

loose

Suspensory Ligament

107

weak

Udder Height

111

deep

Teat Length

104

short

Teat Thickness

105

thin

Teat placement (front)

103

wide

Teat placement (rear)

106

outwards

Teat direction (rear)

96

outwards

Udder Purity

99

add. teats

MILK

Dtrs.

HD kg

Milk kg
+742

Butterfat %
+0,02

Protein %
-0,05

1. L

78

8.105

7.191

4,27

3,41

BEEF

113 96%

Daily gain

120 98%

Dressing perc.

107 90%

Carcass grade

106 97%

FITNESS

96 91%

Productive life

98 81%

Persistence

104 96%

Fertility

91 84%

Udder health

96 94%

Cell count

97 94%

Milking speed

102 95%

Calving ease pat.

103 99%

Prod. increase

105 89%

Calf vitality

108 93%

Calving ease mat.

104 92%

Semen fertility

+0%

BIO

115 94%

Milking behaviour

100 79%

TYPE TRAITS DAUGHTERS: 86 (92%)

76

88

100

112

124

136

Body

106

Muscularity

116

Feet & Legs

98

Udder

105

Cross Height

102

small

Body Length

112

short

Hip Width

108

narrow

Body Depth

110

shallow

Pelvic Angle

104

ascending

Hock Angularity

110

straight

Hock Development

91

swollen

Pastern

94

weak

Hoof Height

110

low angles

Fore Udder Length

107

short

Rear Udder Length

99

short

Att.of Fore Udder

105

loose

Suspensory Ligament

91

weak

Udder Height

105

deep

Teat Length

93

short

Teat Thickness

107

thin

Teat placement (front)

90

wide

Teat placement (rear)

95

VERDEN P*S

HB-Nr. 167473 | DE 09 51785087 | *05.09.2016
Breeder: Angermilch GbR, Seßlach
aAa-Code 561423 | BC: A1A2 | KC: AA



TYP: **S** **A** **R**

PEDIGREE LINE: Redad

VERMEER REUMUT RAUFBOLD
DE 09 48888363 Rosalyn SANDDORN
Rosita

Free 85-86-84-85 IROLA PS ROTAX
DE 09 48230993

4/3,2 8.627 4,48 3,78 Franzis RUREX
HL: 2017 8.870 4,45 3,74 5/4,4 7.592 4,19 3,59 Fransis

TMI	MI	BI	FIT
128 90%	118 97%	101 94%	116 89%

● FERTILITY ● TOP UDDER QUALITY



MILK

	Dtrs.	HD kg	Milk kg +401	Butterfat % +0,26	Protein % +0,04
1. L	54	7.860	6.617	4,45	3,50

BEEF

Daily gain	98 96%	Dressing perc.	102 87%	Carcass grade	100 94%
------------	--------	----------------	---------	---------------	---------

FITNESS

Productive life	114 77%	Persistency	93 95%	Fertility	128 80%
Udder health	102 92%	Cell count	102 92%	Milking speed	111 94%
Calving ease pat.	96 97%	Prod. increase	103 77%	Calf vitality	95 88%
Calving ease mat.	95 89%	Semen fertility	+1%	BIO	123 91%
Milking behaviour	91 72%				

TYPE TRAITS DAUGHTERS: 69 (91%)

	76	88	100	112	124	136
Body	106					
Muscularity	88					
Feet & Legs	109					
Udder	116					
Cross Height	107	small				large
Body Length	110	short				long
Hip Width	102	narrow				wide
Body Depth	91	shallow				deep
Pelvic Angle	87	ascending				slope
Hock Angularity	105	straight				sickled
Hock Development	111	swollen				dry
Pastern	111	weak				strong
Hoof Height	111	low angles				steep angles
Fore Udder Length	112	short				long
Rear Udder Length	100	short				long
Att. of Fore Udder	108	loose				tight
Suspensory Ligament	89	weak				strong
Udder Height	118	deep				high
Teat Length	96	short				long
Teat Thickness	85	thin				thick
Teat placement (front)	110	wide				close
Teat placement (rear)	105	outwards				inwards
Teat direction (rear)	108	outwards				inwards
Udder Purity	106	add. teats				no add. teats

VIDI Pp*

HB-Nr. 173678 | DE 09 53973291 | *24.10.2018
Breeder: Draxinger, Waldkirchen
aAa-Code 651423 | BC: A1A2 | KC: AB | ET



TYP: **S** **A** **R**

PEDIGREE LINE: Redad

VOTARY P*S RUHMREICH PS RUSTICO
DE 09 46894585 Granada RUMGO
Goldma

Wiranga 85-83-87-84 MAHANGO Pp* MUNGO Pp
DE 09 51237461

3/305 10.860 4,31 3,91 Wiralla WINRAL
HL: 2. 12.350 4,21 3,99 5/84 1.964 4,97 3,46 Willa

TMI	MI	BI	FIT
125 81%	117 87%	101 86%	116 85%

● PERFECT DUAL PURPOSE ● STRONG MUSCULARITY



MILK

	Dtrs.	HD kg	Milk kg +756	Butterfat % -0,08	Protein % -0,04
--	-------	-------	-----------------	----------------------	--------------------

BEEF

Daily gain	108 88%	Dressing perc.	93 84%	Carcass grade	101 86%
------------	---------	----------------	--------	---------------	---------

FITNESS

Productive life	109 76%	Persistency	97 80%	Fertility	116 76%
Udder health	111 85%	Cell count	115 80%	Milking speed	102 86%
Calving ease pat.	104 99%	Prod. increase	101 78%	Calf vitality	104 98%
Calving ease mat.	113 93%	Semen fertility	+0%	BIO	119 87%
Milking behaviour	102 66%				

TYPE TRAITS DAUGHTERS: (82%)

	76	88	100	112	124	136
Body	119					
Muscularity	116					
Feet & Legs	102					
Udder	106					
Cross Height	121	small				large
Body Length	119	short				long
Hip Width	112	narrow				wide
Body Depth	117	shallow				deep
Pelvic Angle	122	ascending				slope
Hock Angularity	104	straight				sickled
Hock Development	96	swollen				dry
Pastern	107	weak				strong
Hoof Height	105	low angles				steep angles
Fore Udder Length	106	short				long
Rear Udder Length	106	short				long
Att. of Fore Udder	106	loose				tight
Suspensory Ligament	98	weak				strong
Udder Height	102	deep				high
Teat Length	105	short				long
Teat Thickness	94	thin				thick
Teat placement (front)	115	wide				close
Teat placement (rear)	108	outwards				inwards
Teat direction (rear)	107	outwards				inwards
Udder Purity	97	add. teats				no add. teats



VOGTLAND P*S

HB-Nr. 871141 | DE 09 53846762 | *28.03.2018
 Breeder: Helminger, Teisendorf
 aAa-Code 456321 | BC: **A2A2** | KC: AA



TYP: **S** **A** **R**

PEDIGREE

VOTARY P*S RUHMREICH PS RUSTICO
 DE 09 46894585 Granada RUMGO

Esta 83-83-84-82 **WENDLINGER** WILLE

DE 09 51208549

4/305 9.196 3,99 3,48 517 **SAMLAND**

HL: 2. 10.277 3,83 3,42 2/284 4.450 3,43 3,49 Erika

TMI	MI	BI	FIT
117 83%	107 88%	91 97%	120 86%



VULPI PP*

HB-Nr. 866037 | DE 09 54418458 | *25.02.2019
 Breeder: Poschinger, Neumarkt St. Veit
 aAa-Code 426351 | BC: **A2A2** | KC: AA



TYP: **S** **A** **R**

PEDIGREE

VERDEN P*S VERMEER REUMUT
 DE 09 51785087 Free IROLA PS

644 MAHANGO Pp* MUNGO Pp

DE 09 52380066

4/305 9.512 4,18 3,57 598 **VETERAN**

HL: 2. 9.443 4,25 3,63 4/3,8 9.831 4,05 3,47 479

TMI	MI	BI	FIT
120 77%	119 86%	96 77%	109 81%

●ALLROUNDSIRE ●SUPER PERFORMANCES TUNING

MILK

	Dtrs.	HD kg	Milk kg	Butterfat %	Protein %
100 days	1	7.651	+553 1.177	-0,12 4,12	-0,15 2,99

BEEF

Daily gain	99 98%	Dressing perc.	88 97%	Carcass grade	96 97%
------------	---------------	----------------	---------------	---------------	---------------

FITNESS

Productive life	121 76%	Persistence	107 81%	Fertility	114 77%
Udder health	112 85%	Cell count	115 80%	Milking speed	110 86%
Calving ease pat.	109 99%	Prod. increase	108 75%	Calf vitality	100 98%
Calving ease mat.	107 93%	Semen fertility	+1%	BIO	120 88%
Milking behaviour	101 64%				

TYPE TRAITS DAUGHTERS: 8 (80%)

	76	88	100	112	124	136
Body						
Muscularity						
Feet & Legs						
Udder						
Cross Height	95	small				large
Body Length	98	short				long
Hip Width	102	narrow				wide
Body Depth	103	shallow				deep
Pelvic Angle	92	ascending				slope
Hock Angularity	102	straight				sickled
Hock Development	99	swollen				dry
Pastern	115	weak				strong
Hoof Height	107	low angles				steep angles
Fore Udder Length	105	short				long
Rear Udder Length	102	short				long
Att.of Fore Udder	110	loose				tight
Suspensory Ligament	86	weak				strong
Udder Height	105	deep				high
Teat Length	99	short				long
Teat Thickness	103	thin				thick
Teat placement (front)	111	wide				close
Teat placement (rear)	98	outwards				inwards
Teat direction (rear)	106	outwards				inwards
Udder Purity	100	add. teats				no add. teats

MILK

	Dtrs.	HD kg	Milk kg	Butterfat %	Protein %
			+591	+0,12	+0,01

BEEF

Daily gain	93 79%	Dressing perc.	98 76%	Carcass grade	99 74%
------------	---------------	----------------	---------------	---------------	---------------

FITNESS

Productive life	118 69%	Persistence	101 78%	Fertility	109 69%
Udder health	99 81%	Cell count	98 77%	Milking speed	108 84%
Calving ease pat.	99 99%	Prod. increase	109 72%	Calf vitality	91 93%
Calving ease mat.	104 85%	Semen fertility	+1%	BIO	120 84%
Milking behaviour	98 59%				

TYPE TRAITS DAUGHTERS: (80%)

	76	88	100	112	124	136
Body						
Muscularity						
Feet & Legs						
Udder						
Cross Height	112	small				large
Body Length	112	short				long
Hip Width	107	narrow				wide
Body Depth	98	shallow				deep
Pelvic Angle	106	ascending				slope
Hock Angularity	92	straight				sickled
Hock Development	102	swollen				dry
Pastern	112	weak				strong
Hoof Height	114	low angles				steep angles
Fore Udder Length	110	short				long
Rear Udder Length	95	short				long
Att.of Fore Udder	110	loose				tight
Suspensory Ligament	87	weak				strong
Udder Height	116	deep				high
Teat Length	110	short				long
Teat Thickness	99	thin				thick
Teat placement (front)	102	wide				close
Teat placement (rear)	98	outwards				inwards
Teat direction (rear)	109	outwards				inwards
Udder Purity	107	add. teats				no add. teats

WACHMANN

HB-Nr. 606429 | AT 23 6972 168 | *26.09.2017

Breeder: Peintner, Assling

aAa-Code 423561 | BC: **A2A2** | KC: AA

Foto: Müller

TYP: ← S A R →

PEDIGREE

LINE: Horex

WATTKING

WATT

AT 96 1447 328

Herzogin

Cleo

8-8-7-8

WASSERMANN

AT 99 2722 716

10.630

4,07 3,75

Clara

WEINOLD

5/299

8.785 3,91 3,72

TMI	MI	BI	FIT
122 80%	115 87%	111 89%	105 83%

MILK

Dtrs.	HD kg	Milk kg +807	Butterfat % -0,11	Protein % -0,11
-------	-------	--------------	-------------------	-----------------

BEEF

111 89%

Daily gain	113 90%	Dressing perc.	109 83%	Carcass grade	107 88%
------------	---------	----------------	---------	---------------	---------

FITNESS

105 83%

Productive life	111 72%	Persistency	97 82%	Fertility	103 72%
Udder health	99 84%	Cell count	97 80%	Milking speed	112 85%
Calving ease pat.	89 97%	Prod. increase	109 76%	Calf vitality	98 87%
Calving ease mat.	110 81%	Semen fertility	+1%	BIO	119 86%
Milking behaviour	103 64%				

TYPE TRAITS DAUGHTERS: 8 (80%)

	76	88	100	112	124	136
Body	106					
Muscularity	100					
Feet & Legs	99					
Udder	105					
Cross Height	108	small				large
Body Length	108	short				long
Hip Width	102	narrow				wide
Body Depth	99	shallow				deep
Pelvic Angle	97	ascending				slope
Hock Angularity	98	straight				sickled
Hock Development	101	swollen				dry
Pastern	95	weak				strong
Hoof Height	101	low angles				steep angles
Fore Udder Length	97	short				long
Rear Udder Length	98	short				long
Att.of Fore Udder	99	loose				tight
Suspensory Ligament	105	weak				strong
Udder Height	113	deep				high
Teat Length	97	short				long
Teat Thickness	107	thin				thick
Teat placement (front)	97	wide				close
Teat placement (rear)	104	outwards				inwards
Teat direction (rear)	100	outwards				inwards
Udder Purity	99	add. teats				no add. teats

WALLNER

HB-Nr. 173408 | DE 09 51821435 | *22.11.2016

Breeder: Wallner, Bad Birnbach

aAa-Code 561423 | BC: **A2-I** | KC: **BB**

Photo: Müller

TYP: ← S A R →

PEDIGREE

LINE: Horex

WISCONA

WILLE

WINNIPEG

DE 09 47520987

Jana

RUAP

Jule

Ascona

87-83-89-80

ZAUBER

ZAHNER

DE 09 49833241

4/2,9

9.397 4,39 3,56

Andora

RUMGO

HL: 2020

10.236 3,90 3,48

4/3,9

9.223 4,74 3,84

Andrea

TMI	MI	BI	FIT
117 92%	104 98%	110 96%	112 90%

MILK

Dtrs.	HD kg	Milk kg +319	Butterfat % -0,20	Protein % +0,02
1. L	65	8.652	7.132	4,03
				3,57

BEEF

110 96%

Daily gain	110 98%	Dressing perc.	106 91%	Carcass grade	106 97%
------------	---------	----------------	---------	---------------	---------

FITNESS

112 90%

Productive life	115 79%	Persistency	110 97%	Fertility	105 82%
Udder health	107 93%	Cell count	103 94%	Milking speed	112 95%
Calving ease pat.	78 98%	Prod. increase	102 77%	Calf vitality	99 91%
Calving ease mat.	111 92%	Semen fertility	+1%	BIO	118 93%
Milking behaviour	94 76%				

TYPE TRAITS DAUGHTERS: 103 (92%)

	76	88	100	112	124	136
Body	109					
Muscularity	113					
Feet & Legs	114					
Udder	103					
Cross Height	108	small				large
Body Length	109	short				long
Hip Width	108	narrow				wide
Body Depth	107	shallow				deep
Pelvic Angle	94	ascending				slope
Hock Angularity	89	straight				sickled
Hock Development	97	swollen				dry
Pastern	115	weak				strong
Hoof Height	114	low angles				steep angles
Fore Udder Length	96	short				long
Rear Udder Length	93	short				long
Att.of Fore Udder	105	loose				tight
Suspensory Ligament	84	weak				strong
Udder Height	111	deep				high
Teat Length	104	short				long
Teat Thickness	105	thin				thick
Teat placement (front)	97	wide				close
Teat placement (rear)	95	outwards				inwards
Teat direction (rear)	92	outwards				inwards
Udder Purity	105	add. teats				no add. teats

WOLFSEGG

HB-Nr. 606334 | AT 55 0853 538 | *24.01.2017
Breeder: Lachner, Weissenkirchen im Atterga
aAa-Code 516342 | BC: **A2A2** | KC: AB



TYP: **S** **A** **R**

PEDIGREE

WALFRIED **WAL** **GS WAXIN**
AT 52 0368 918 Flora **MALEFIZ**

5.Gina 7-7-8-8 **WIPEG** **WINNIPEG**

AT 07 5668 422 20.Gugi **MANDELA**
3/2,6 6.878 3,67 3,38 4/305 7.513 4,01 3,21 8.Gisella

TMI	MI	BI	FIT
122 88%	109 96%	99 93%	118 88%

● **STRONG MUSCULARITY** ● **GOOD MILKING SPEED**



MILK

	Dtrs.	HD kg	Milk kg +299	Butterfat % +0,05	Protein % +0,00
1. L	30	8.100	6.539	4,25	3,52

BEEF

Daily gain	97 94%	Dressing perc.	98 91%	Carcass grade	103 93%
------------	---------------	----------------	---------------	---------------	----------------

FITNESS

Productive life	112 77%	Persistence	112 93%	Fertility	108 79%
Udder health	116 91%	Cell count	117 90%	Milking speed	113 93%
Calving ease pat.	106 95%	Prod. increase	109 79%	Calf vitality	108 84%
Calving ease mat.	111 87%	Semen fertility	-2%	BIO	126 91%
Milking behaviour	89 75%				

TYPE TRAITS DAUGHTERS: 48 (90%)

	76	88	100	112	124	136
Body	115					
Muscularity	115					
Feet & Legs	114					
Udder	107					
Cross Height	112	small				large
Body Length	116	short				long
Hip Width	117	narrow				wide
Body Depth	118	shallow				deep
Pelvic Angle	111	ascending				slope
Hock Angularity	93	straight				sickled
Hock Development	92	swollen				dry
Pastern	110	weak				strong
Hoof Height	108	low angles				steep angles
Fore Udder Length	102	short				long
Rear Udder Length	104	short				long
Att.of Fore Udder	109	loose				tight
Suspensory Ligament	97	weak				strong
Udder Height	101	deep				high
Teat Length	90	short				long
Teat Thickness	90	thin				thick
Teat placement (front)	95	wide				close
Teat placement (rear)	92	outwards				inwards
Teat direction (rear)	94	outwards				inwards
Udder Purity	99	add. teats				no add. teats

ZIROS

HB-Nr. 860450 | DE 09 54007932 | *01.10.2018
Breeder: Lautenbacher, Wielenbach
aAa-Code 564123 | BC: **A2A2** | KC: **BB**



TYP: **S** **A** **R**

PEDIGREE

ZOMBIE **ZAUBER** **ZAHNER**
DE 09 47547349 Ozon **RUMGO**

Gisella 88-85-79-85 **HUTERA** **HUTMANN**

DE 09 51057709 Gittl **WILDWEST**

HL: 3. 14.918 4,64 3,64 6/7,2 10.058 5,14 4,09 Gritta

TMI	MI	BI	FIT
127 79%	124 86%	116 79%	102 83%



MILK

	Dtrs.	HD kg	Milk kg +1035	Butterfat % -0,11	Protein % -0,03
--	-------	-------	------------------	----------------------	--------------------

BEEF

Daily gain	118 80%	Dressing perc.	111 79%	Carcass grade	112 77%
------------	----------------	----------------	----------------	---------------	----------------

FITNESS

Productive life	104 73%	Persistence	107 80%	Fertility	97 73%
Udder health	105 83%	Cell count	105 79%	Milking speed	94 85%
Calving ease pat.	97 99%	Prod. increase	108 77%	Calf vitality	92 92%
Calving ease mat.	109 84%	Semen fertility	+0%	BIO	124 85%
Milking behaviour	102 62%				

TYPE TRAITS DAUGHTERS: (81%)

	76	88	100	112	124	136
Body	105					
Muscularity	106					
Feet & Legs	108					
Udder	117					
Cross Height	108	small				large
Body Length	109	short				long
Hip Width	105	narrow				wide
Body Depth	100	shallow				deep
Pelvic Angle	107	ascending				slope
Hock Angularity	97	straight				sickled
Hock Development	101	swollen				dry
Pastern	103	weak				strong
Hoof Height	107	low angles				steep angles
Fore Udder Length	105	short				long
Rear Udder Length	101	short				long
Att.of Fore Udder	109	loose				tight
Suspensory Ligament	108	weak				strong
Udder Height	113	deep				high
Teat Length	107	short				long
Teat Thickness	92	thin				thick
Teat placement (front)	107	wide				close
Teat placement (rear)	108	outwards				inwards
Teat direction (rear)	113	outwards				inwards
Udder Purity	108	add. teats				no add. teats

MAIDAN 177427DE 09 47662537 | *19.11.2012 | Breeder: Hackl, Zwiesel
aAa-Code 543612 | BC: **A2A2** | KC: AA

Photo: Müller

**PEDIGREE**

LINE: Metz

MANIGO MANDELA
DE 09 43304203 Nitti**Koko** 7-7-7-8 **HUPSOL**
DE 09 43912710
6/5,2 9.859 4,13 3,29 Konny

TMI	MI	BI	FIT
121 96%	108 99%	102 99%	117 95%

MILKMilk kg **+566** Butterfat % **-0,23** Protein % **-0,04****BEEF****102 99%**Daily gain **102 99%** Dressing perc. **100 97%** Carcass grade **103 99%****FITNESS****117 95%**

Productive life	115 88%	Persistency	105 99%	Fertility	107 92%
Udder health	114 97%	Cell count	116 98%	Milking speed	93 99%
Calving ease pat.	103 99%	Prod. increase	112 93%	Calf vitality	114 98%
Calving ease mat.	109 97%	Semen fertility	+2%	BIO	122 97%
Milking behaviour	98 84%				

B: **92** M: **108** F: **111** U: **103****MOREMI PP*** 175933DE 09 50785125 | *05.08.2016 | Breeder: Knon, Untergriesbach
BC: **A2A2** | KC: AA

Photo: Pfaller

**PEDIGREE**

LINE: Metz

MAHANGO Pp* MUNGO Pp
DE 09 48097266 Falter**Tamaris** 84-84-85-83 **MARMOR PS**
DE 09 48483520
5/4 8.372 3,63 3,43 Tamara

TMI	MI	BI	FIT
111 97%	96 99%	115 99%	111 97%

MILKMilk kg **+482** Butterfat % **-0,35** Protein % **-0,22****BEEF****115 99%**Daily gain **101 99%** Dressing perc. **117 98%** Carcass grade **112 99%****FITNESS****111 97%**

Productive life	113 92%	Persistency	115 99%	Fertility	118 95%
Udder health	92 98%	Cell count	91 99%	Milking speed	98 99%
Calving ease pat.	111 99%	Prod. increase	103 96%	Calf vitality	95 99%
Calving ease mat.	102 99%	Semen fertility	+1%	BIO	114 98%
Milking behaviour	89 89%				

B: **95** M: **123** F: **108** U: **88****PASSAU** 177438DE 09 48484238 | *25.04.2013 | Breeder: Wanninger, Kollnburg
Hered. def. F4C | BC: **A2A2** | KC: **BB**

Photo: Gruber

**PEDIGREE**

LINE: Planet II

PASSION PLANNER
DE 09 41387798 Banane**Tatjana** RONN
DE 09 36195671
15/14,67 6,28 4,03 3,64 Tocki

TMI	MI	BI	FIT
106 92%	105 98%	104 95%	100 92%

MILKMilk kg **+69** Butterfat % **+0,02** Protein % **+0,09****BEEF****104 95%**Daily gain **108 97%** Dressing perc. **99 87%** Carcass grade **105 96%****FITNESS****100 92%**

Productive life	100 84%	Persistency	98 96%	Fertility	98 86%
Udder health	103 93%	Cell count	102 94%	Milking speed	89 95%
Calving ease pat.	79 98%	Prod. increase	100 94%	Calf vitality	100 90%
Calving ease mat.	106 92%	Semen fertility	+2%	BIO	104 94%
Milking behaviour	97 73%				

B: **114** M: **117** F: **106** U: **105****PETERSBERG** 194000DE 09 52155726 | *04.03.2017 | Breeder: Breu, Brannenburg
aAa-Code 543162 | BC: A1A2 | KC: AA

Photo: Müller

**PEDIGREE**

LINE: Planet II

PASSION PLANNER
DE 09 41387798 Banane**Lolly** 82-82-84-86 **REUMUT**
DE 09 50489874
3/295 7.281 4,46 3,81 Lulu

TMI	MI	BI	FIT
112 87%	122 95%	91 92%	91 87%

MILKMilk kg **+397** Butterfat % **+0,38** Protein % **+0,07****BEEF****91 92%**Daily gain **105 94%** Dressing perc. **89 87%** Carcass grade **92 91%****FITNESS****91 87%**

Productive life	96 76%	Persistency	107 93%	Fertility	78 76%
Udder health	107 91%	Cell count	105 90%	Milking speed	121 93%
Calving ease pat.	105 95%	Prod. increase	97 78%	Calf vitality	94 83%
Calving ease mat.	104 86%	Semen fertility	+0%	BIO	108 90%
Milking behaviour	100 73%				

B: **116** M: **112** F: **104** U: **113**

RAFFZAHN 162801

DE 09 74575770 | *19.01.2009 | Breeder: Hessbachhof Merk, Lehrberg
Hered. def. F5C | aAa-Code 534126 | BC: A1A2 | KC: AA



Photo: Gruber



PEDIGREE **LINE:** Redad

RAU **RUMBA**
AT 65 3713 345 IRINA

717 9-7-7-7 **ZAHNER**
DE 09 41344236
4/4,6 9.145 4,38 3,66 531

TMI **MI** **BI** **FIT**
97 99% **97 99%** **105 99%** **97 99%**

MILK

Milk kg **-131** Butterfat % **+0,01** Protein % **+0,01**

BEEF

Daily gain **115 99%** Dressing perc. **94 99%** Carcass grade **108 99%**

FITNESS

Productive life **98 99%** Persistency **74 99%** Fertility **98 99%**
Udder health **111 99%** Cell count **109 99%** Milking speed **94 99%**
Calving ease pat. **85 99%** Prod. increase **88 99%** Calf vitality **89 99%**
Calving ease mat. **100 99%** Semen fertility **+2%** BIO **93 99%**
Milking behaviour **103 94%**

B: **110** M: **112** F: **95** U: **122**

STEINBACH 606405

AT 01 0837 668 | *13.09.2017 | Breeder: Oblinger, Mehrnbach
aAa-Code 564132 | BC: **A2A2** | KC: AA | ET



Photo: Gruber



PEDIGREE **LINE:** Streik

SERTOLI **SANDDORN**
DE 09 45623781 Xenia

Elena 7-7-7-8 **VANADIN**
AT 94 2391 628
2/285 7.377 4,11 3,39 Eva

TMI **MI** **BI** **FIT**
113 88% **104 95%** **106 96%** **108 87%**

MILK

Milk kg **+90** Butterfat % **+0,10** Protein % **-0,03**

BEEF

Daily gain **98 97%** Dressing perc. **112 95%** Carcass grade **100 96%**

FITNESS

Productive life **118 75%** Persistency **114 92%** Fertility **97 77%**
Udder health **99 90%** Cell count **93 89%** Milking speed **100 93%**
Calving ease pat. **112 99%** Prod. increase **105 78%** Calf vitality **106 95%**
Calving ease mat. **106 89%** Semen fertility **+0%** BIO **121 91%**
Milking behaviour **104 73%**

B: **98** M: **113** F: **110** U: **121**

WENDLINGER 172997

DE 09 47682611 | *05.08.2012 | Breeder: Gassner, Holzheim a.Forst
aAa-Code 456312 | BC: A1A2 | KC: AA



Photo: Müller



PEDIGREE **LINE:** Horex

WILLE **WINNIPEG**
DE 08 13516428 Liesel

Chiara **GEBALOT**
DE 09 40605632
7/6,2 9.585 4,65 3,83 Cormeli

TMI **MI** **BI** **FIT**
114 99% **110 99%** **90 99%** **109 99%**

MILK

Milk kg **+773** Butterfat % **-0,18** Protein % **-0,15**

BEEF

Daily gain **84 99%** Dressing perc. **101 99%** Carcass grade **89 99%**

FITNESS

Productive life **108 98%** Persistency **114 99%** Fertility **104 99%**
Udder health **106 99%** Cell count **107 99%** Milking speed **111 99%**
Calving ease pat. **100 99%** Prod. increase **94 99%** Calf vitality **101 99%**
Calving ease mat. **110 99%** Semen fertility **+1%** BIO **111 99%**
Milking behaviour **97 96%**

B: **101** M: **70** F: **112** U: **100**



**BAYERN
GENETIK**

Perfect Match.

Your contact for North America:

Dr. John Popp

Big Bear Genetics – Bayern-Genetik

bigbeargenetics@inetlink.ca

204-636-2387 ph • 204-636-7705 fax

www.bigbeargenetics.com

Hawkeye Breeders

515-993-4711 for direct orders

**BAYERN
GENETIK**

Perfect Match.