

smaXtec


More insights.
With proven cow monitoring.



STEPS AHEAD THROUGH EARLY DETECTION

 Health

 Heat detection

 Calving

UNDERSTAND YOUR COW. FROM WITHIN.



WHAT MAKES THE SMAXTEC TECHNOLOGY SO SPECIAL?

smaXtec measures directly in the reticulum. Why is this the most suitable location? As the reticulum and rumen are the motor of the cow, any signs of changes first occur here. This is how smaXtec delivers the earliest possible disease, estrus, and onset of calving detection. More timely information allows the farmer to take the appropriate measures sooner in order to save costs, reduce diseases, optimize heat detection, and monitor the calving process better than ever before. In addition to being maintenance-free with no risk of injury or loss, smaXtec delivers the best information on inner body temperature (the most important health indicator!), drinking behavior and rumination activity.

HOW DOES SMAXTEC HELP YOU TO BETTER UNDERSTAND YOUR COWS?

Unrivalled insights and accuracy give you an information advantage! When you can see what is not yet visible on the outside, you are able to intervene sooner in order to prevent problems rather than needing to fix them. This results in the best possible animal welfare and improvement in your work-life balance!

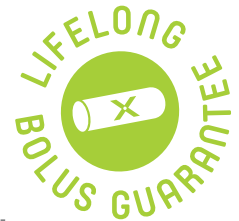
Permanent, direct insights with analyses supported by artificial intelligence and the highest precision help you to even better understand your cows. This is why researchers, veterinarians, and future-oriented farmers rely on smaXtec.

HOW DOES THE COW UNDERSTANDING SYSTEM WORK?

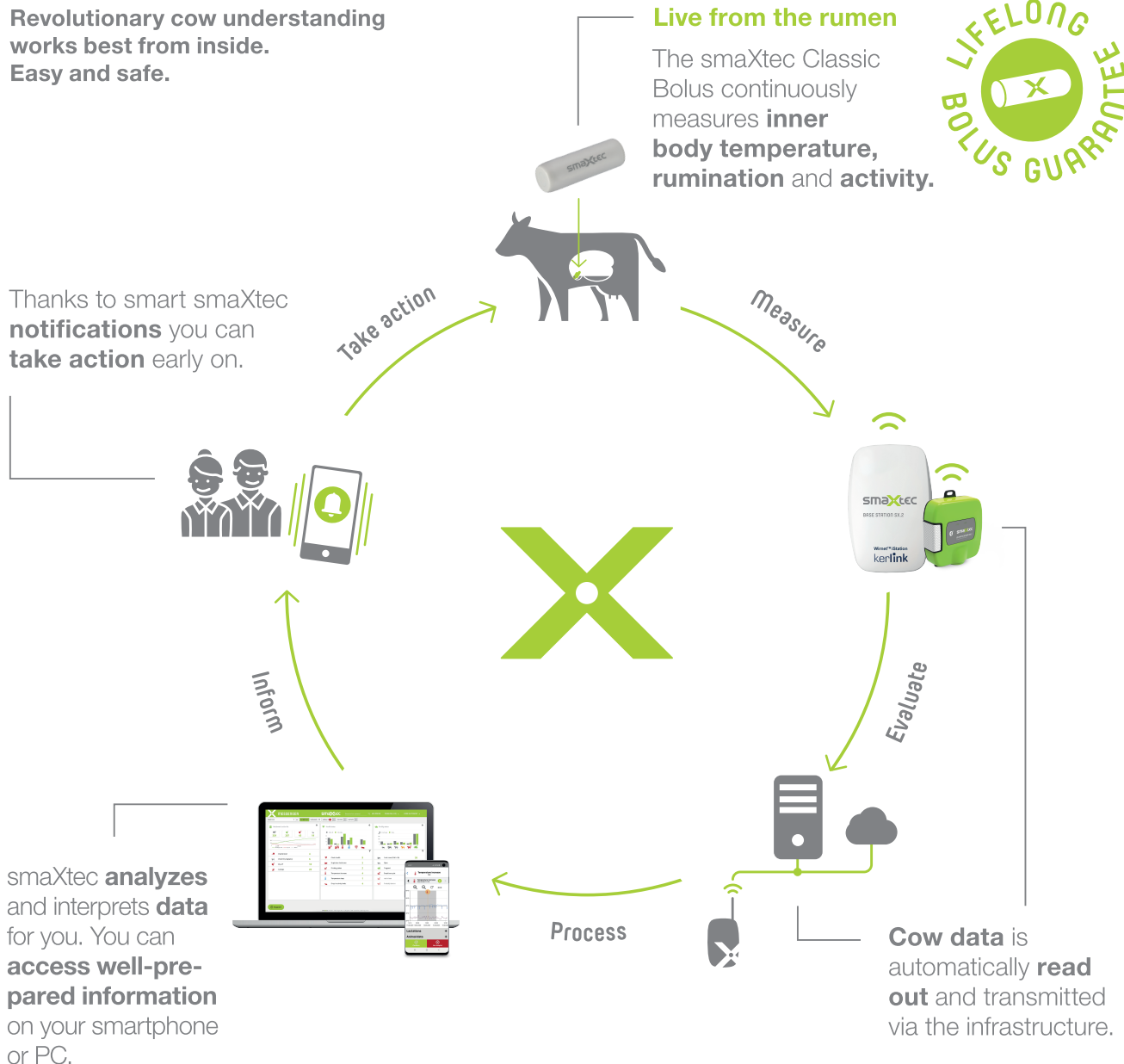
Revolutionary cow understanding works best from inside. Easy and safe.

Live from the rumen

The smaXtec Classic Bolus continuously measures **inner body temperature, rumination and activity.**



Thanks to smart smaXtec **notifications** you can **take action** early on.



smaXtec **analyzes** and interprets **data** for you. You can **access well-prepared information** on your smartphone or PC.

Cow data is automatically **read out** and transmitted via the infrastructure.

SAFE.

The bolus remains in the reticulum permanently. There is **no risk of loss** of the device **or injury** to the animal.

EASY.

You only need **electricity in the barn**, a PC & smartphone. After the **simple** installation the system is completely **maintenance-free.**

BETTER.

Award-winning **early detection** in the areas **health & reproduction** makes dairy farms **future-proof.**

WHAT **SMAXTEC** DOES FOR YOU

Intelligent alerts and recommendations for action.



UNIQUE INSIGHTS!
Only smaXtec measures inner body temperature, drinking behavior and rumination activity via rumen contractions.



HEALTH MONITORING AND PREVENTION

- Earliest possible detection of changes in the **health status**
- Immediate notification at first signs of **fever or metabolic diseases**
- **Reduced** usage of medication like **antibiotics**
- Significant increase in **animal health**



CALVING DETECTION

- Reliable and early detection of **calving**
- Sufficient time **for preparation** thanks to early notification (on average 15 hours before calving)
- **Prevention** of severe **complications** in the critical period around calving



HEAT DETECTION

- Precise heat detection incl. **recommended insemination time**
- Improved **conception rates** and shorter **calving intervals**
- Fast identification of **fertility problems**



REDUCED COST AND WORKLOAD

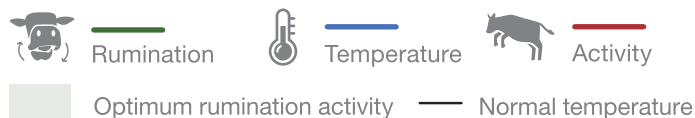
- Secured **milk production**
- **Time-** and **location-independent** monitoring of your animals
- Elimination of **time-consuming routine work** such as taking temperature or visual estrus monitoring
- **Integration** with existing **herd management systems**
- **Data sharing** (e.g. with employees or vets) free of charge
- Support **from agricultural experts**



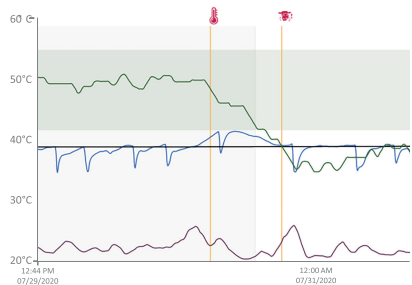


SMAXTEC EARLY DETECTION. BETTER THAN EVER.

LEGEND:



EVEN DEEPER INSIGHTS INTO HEALTH



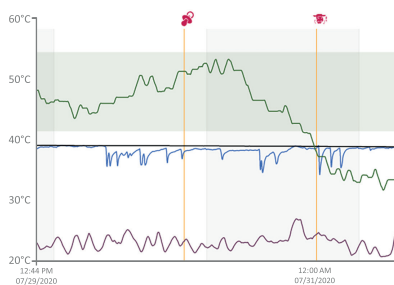
You detect diseases up to 4 days before clinical symptoms become visible. You can already draw conclusions on the type and severity of the disease and take action early.

USE CASE

E.coli-Mastitis: Temperature increases and ruminations decrease are evident in more than 80% of cases. With smaXtec, you detect signs and take measures as early as possible.



EVEN EASIER CALVINGS



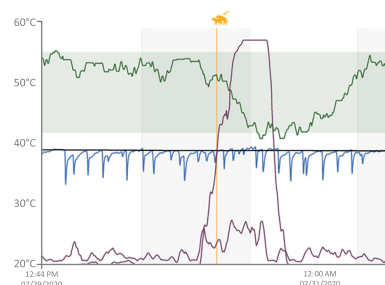
smaXtec informs you early about imminent calvings so you can monitor cow health during this critical period and intervene when necessary.

USE CASE

Milk fever: Inner body temperature, activity levels and ruminations decrease. Thanks to smaXtec you detect symptoms as early as possible for immediate action.



EVEN MORE PRECISE HEAT DETECTION



Heats are detected based on the changes in activity and ruminations. Thanks to the calculated insemination window, you increase your insemination success.

USE CASE

Estrus with **limited signs:** Typical activity increases and ruminations decrease often only occur for a short period of time and at night. Thanks to 24/7 monitoring, you detect the slightest changes in behavior.



ELSA WILL BE SICK IN 4 DAYS.

Thanks to smaXtec
she stays healthy.
The smaXtec measure-
ment of inner body
temperature detects
illnesses **UP TO 4 DAYS**
before external signs
become visible, which
enables early treatment.



Visit our website
and read about the
experience of other
satisfied smaXtec
customers.



WHAT OUR CUSTOMERS SAY



BEST POSSIBLE HEALTH MONITORING

„The smaXtec health monitoring pays for itself: our somatic cell count decreased below 90.000 since using the smaXtec system.“

*Stephan Stork,
Germany*



HEAT DETECTION



„The fertility side of the smaXtec system is very good: It's certainly made an impression on us. We have seen the calving-to-conception rate fall from 95 to 72 days through better identification of bulling cows.“

*Paul Redmore,
United Kingdom*



CALVING DETECTION

„The yearly savings related to calving thanks to smaXtec are about \$2000 due to the reduced number of dead calves and another \$2000 due to the reduced amount of straw used.“

*Michael C., Quintrell Jerseys,
United Kingdom*



REDUCED WORKLOAD

„With smaXtec, it's like having an extra person watching the cows. It has reduced stress - on us and the cows!“

*Michael C., Quintrell Jerseys,
United Kingdom*

EARLY DETECTION

SMAXTEC IS THE BEST TECHNOLOGY

RELIABLE.

Permanent. Robust.
Highly precise (+/-0.03°C).

EASY.

Only one power outlet needed. Plug & play.

24/7.

Access anytime & anywhere.

SAFE.

No loss.
No risk of injury.

VALUABLE.

Work-Life balance.
Better results.

INVISIBLE.

Sensor is not visible from the outside.

INDIVIDUAL.

For every cow.
For every farm.

CONNECTED.

Veterinarian, employees,
herd management software.

AWARD-WINNING ALL-IN-ONE-MONITORING



You have **ALL FUNCTIONS**
in only **ONE SYSTEM**



You detect **DISEASES**
UP TO 4 DAYS before
clinical signs become visible



You reduce **ANTIBIOTIC USE**



You detect **CALVINGS** earlier



You detect **HEATS** precisely



You **KNOW** how your animals
are doing - **ANYWHERE**
and **ANYTIME**



Bolus guarantee for a
COW LIFE LONG!

CONTACT US

and implement the most comprehensive
system for monitoring health and reproduction
in dairy cows on your farm tomorrow!



SMA XTEC INC.

4009 Felland Rd. · Suite 109 · Madison · WI 53718 · USA
E info@smaXtec.com · T +1 866 478 2214 (toll-free)

STAY CONNECTED!



www.smaXtec.com

SIGN UP FOR OUR NEWSLETTER:

smaxtec.com/en/news

